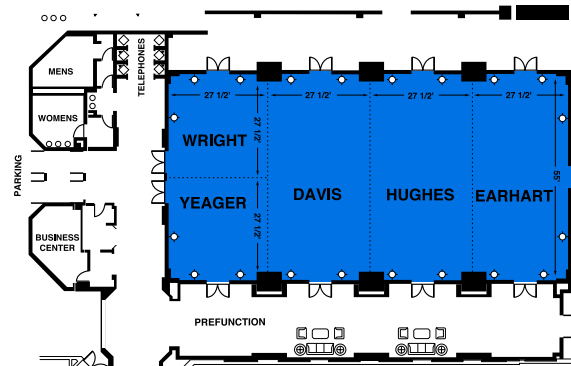
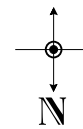


CONFERENCE SUITES

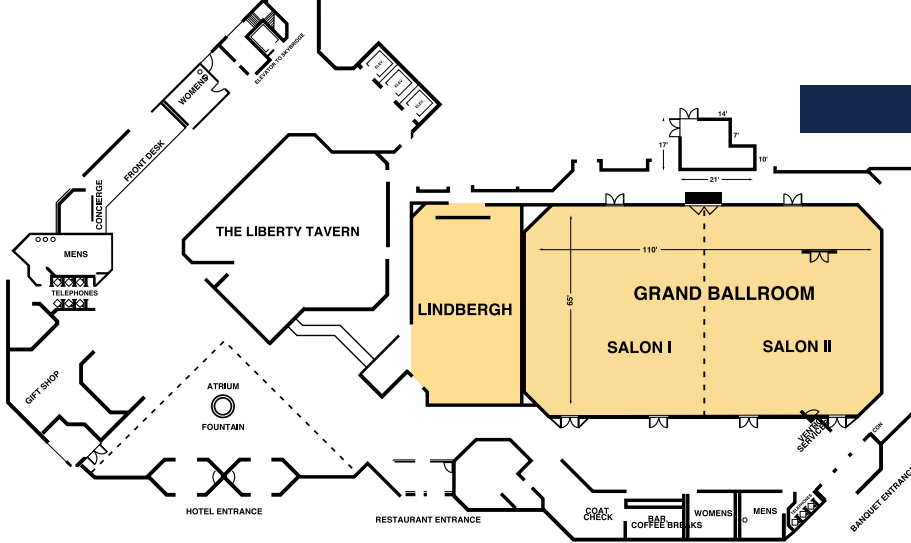


CONFERENCE CENTER

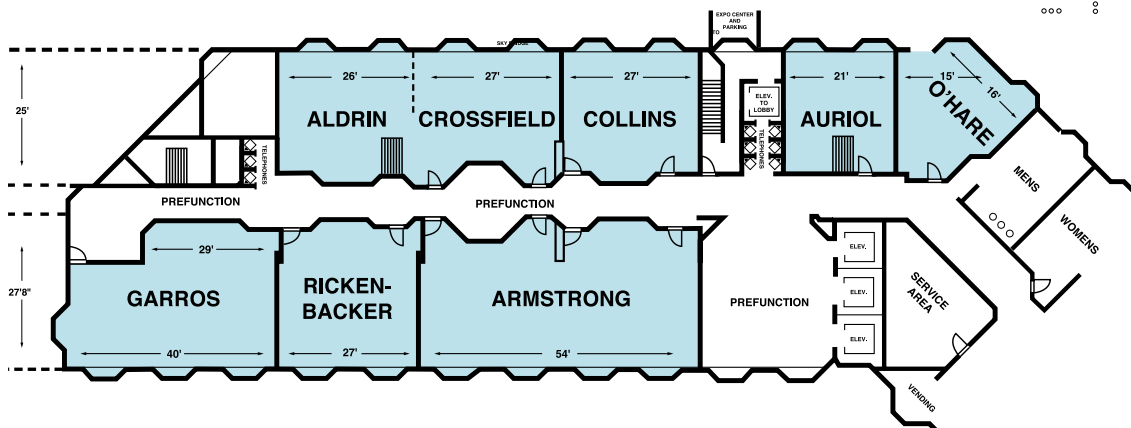
24'



MAIN LEVEL



SECOND FLOOR



SEATING CAPACITIES	LEVEL	ROOM	BANQUET	THEATRE	CLASSROOM	HOLLOW SQUARE	U SHAPED	SQUARE FOOTAGE	CEILING HEIGHT
CONFERENCE CENTER	CONFERENCE CENTER	WRIGHT	40	30	18	18	15	756	11'
	CONFERENCE CENTER	YEAGER	40	30	18	18	15	756	11'
	CONFERENCE CENTER	DAVIS	80	60	42	36	30	1512	11'
	CONFERENCE CENTER	HUGHES	80	60	42	36	30	1512	11'
	CONFERENCE CENTER	EARHART	80	60	42	36	30	1512	11'
	CONFERENCE CENTER	2 SECTIONS	160	-	105	54	42	3025	11'
	CONFERENCE CENTER	3 SECTIONS	240	-	168	-	-	4530	11'
	CONFERENCE CENTER	TOTAL CONFERENCE CENTER	-	-	210	-	-	6000	-
MAIN LEVEL	MAIN LEVEL	GRAND BALLROOM	500	800	300	-	-	6964	11'
	MAIN LEVEL	SALON 1	240	400	120	60	48	3482	11'
	MAIN LEVEL	SALON 2	240	400	120	60	48	3482	11'
	MAIN LEVEL	LINDBERGH	100	150	60	40	30	1892	11'
SECOND FLOOR	SECOND FLOOR	CROSSFIELD	40	30	18	18	15	675	8' 11"
	SECOND FLOOR	ALDRIN	40	30	18	18	15	650	8' 11"
	SECOND FLOOR	GARROS	50	60	30	24	21	980	8' 10"
	SECOND FLOOR	COLLINS	30	30	18	18	15	612	8' 10"
	SECOND FLOOR	RICKENBACKER	30	30	18	18	15	692	8' 10"
	SECOND FLOOR	ARMSTRONG	80	60	35	36	33	1357	8' 10"
	SECOND FLOOR	AURIOL	-	-	-	12'	-	477	7'
	SECOND FLOOR	O'HARE	30	20	15	12	9	445	7'
CONFERENCE SUITES	CONFERENCE SUITES	CONFERENCE SUITES	-	-	-	-	-	550	8'

